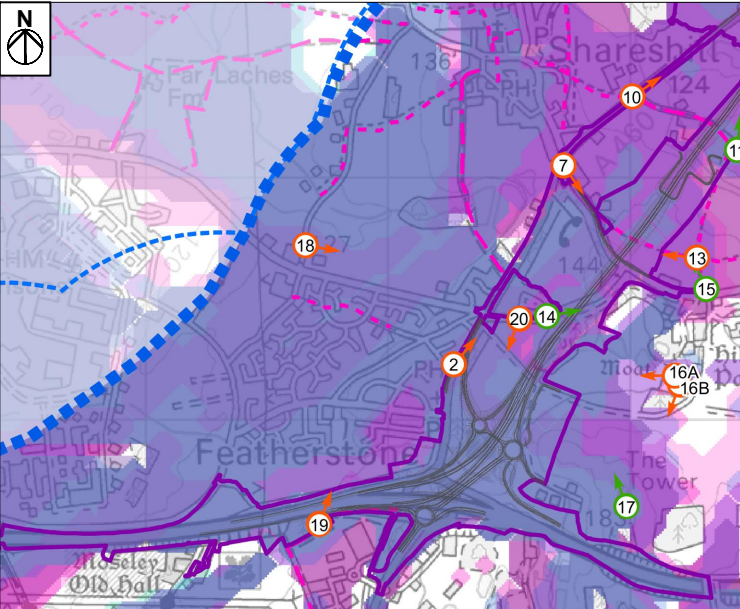





Viewpoint number: 18
Location title: View from Featherstone Lane
Camera model: Canon EOS 6D
Focal length: 50mm
Field of View: 65° (Horizontal)
Camera height: 1.6m
Photo taken: 20/11/2018
Coordinates: 393649, 305690
Elevation: 129m AOD

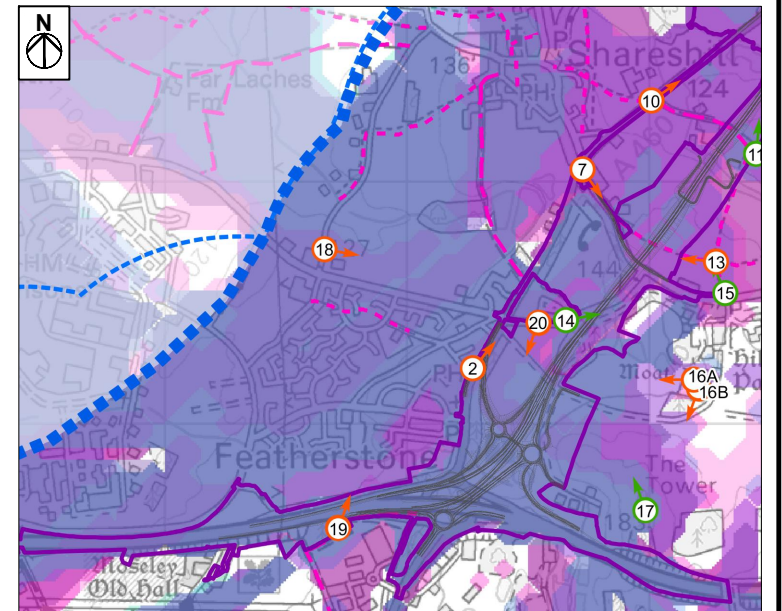



<div>Project:</div> <div>M54 TO M6 LINK ROAD</div> <div>PROJECT NUMBER: 60536736</div> <div>CLIENT: HIGHWAYS ENGLAND</div>	<div>Title:</div> <div>FIGURE 7.23A WINTER - VIEWPOINT 18</div> <div>VIEW FROM FEATHERSTONE LANE</div>	<div>The Cube</div> <div>199 Wharfside Road</div> <div>Birmingham</div> <div>B1 1RN</div> <div></div>	Design: LB							CAD: LB							cm		
			Chk'd: RW							App'd: NW									
			Date: 17/01/2020							Scale: N/A							A3		
			No. HE514465-ACM-ELS-M54_SW_PR_Z-DR-LV-00015															Rev: P02 S8	



- Extent of 50mm single frame image

Viewpoint number: 18
Location title: View from Featherstone Lane
Camera model: Canon EOS 6D
Focal length: 50mm
Field of View: 65° (Horizontal)
Camera height: 1.6m
Photo taken: 21/06/2019
Coordinates: 393649, 305690
Elevation: 129m AOD



<div>Project:</div> <div>M54 TO M6 LINK ROAD</div> <div>PROJECT NUMBER: 60536736</div> <div>CLIENT: HIGHWAYS ENGLAND</div>	<div>Title:</div> <div>FIGURE 7.23B SUMMER - VIEWPOINT 18</div> <div>VIEW FROM FEATHERSTONE LANE</div>	<div>The Cube</div> <div>199 Wharfside Road</div> <div>Birmingham</div> <div>B1 1RN</div> <div></div>	Design: LB		CAD: LB		cm				
			Chk'd: RW		App'd: NW						
			Date: 17/01/2020		Scale: N/A						
			No. HE514465-ACM-ELS-M54_SW_PR_Z-DR-LV-00015					Rev: P02 S8			
											A3